

# ASPEN Resin Filled Gully Drain Cover

Load Class up to C250



ASPEN Stainless hardworking stainless steel products for hardwearing environments: British engineered and sealed with a lifetime guarantee.

## Product Description

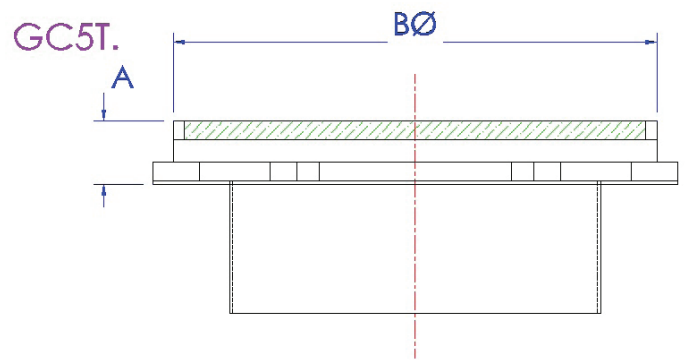
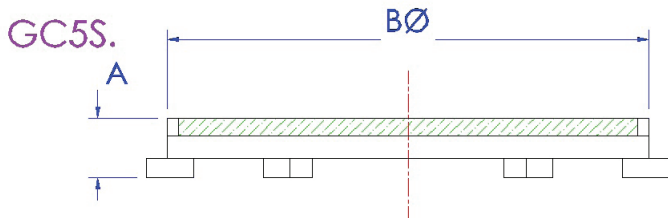
The standard Resin Filled Gully Drain Cover is suitable for the Tiehack and Summit Gullies. The Cover can incorporate the colour, finish and functionality of the surrounding floor surface providing maximum anti slip surface.

Suitable for hygienic environments accessed by medium load factory traffic.

## Technical Specification

- > 10mm stainless steel bar
- > 6mm stainless steel plate.
- > Stitch welded.
- > Grade 304 stainless steel (British Standard 304S31, Euronorm 1.4301).
- > Low Slip Potential according to UKSRG in dry & wet conditions.

MODEL	REF	COVER DIMENSIONS		LOAD CLASS
		A	B	
RESIN SUMMIT	GC5S	26	200	
RESIN TIEHACK	GC5T	35	280	



The blue measurements indicate the variable dimensions shown in the chart above. All dimensions in mm.

# ASPEN Resin Filled Gully Drain Cover

Load Class up to C250



ASPEN Stainless hardworking stainless steel products for hardwearing environments: British engineered and sealed with a lifetime guarantee.

## ASPEN Drainage System

As the UK based designer and supplier of all ASPEN Stainless, John Lord is able to offer a full range of products to complete your drainage system and can customize any of its Units or manufacture complete bespoke drainage systems.

### Key Benefits

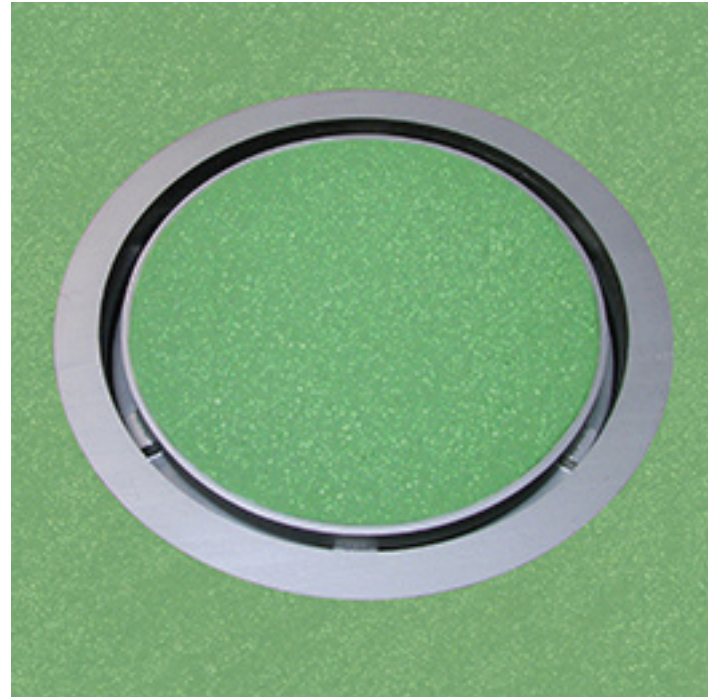
This style of Gully Cover provides maximum liquid drainage to the channel and provides a robust surface to withstand medium load factory traffic on a daily basis. The Cover can incorporate the colour, finish, and functionality of the surrounding floor surface providing maximum anti-slip surface.

### Maintenance

Stainless steel equipment should be occasionally thoroughly checked for retained deposits and concentrated fluid build up that causes corrosion.

### Cleaning

Many factors affect the choice of cleaning method and frequency of its application. Suitable methods for stainless steel are: water and steam; mechanical non abrasive scrubbing; organic solvents and mild detergents.



Resin Filled Gully Drain Cover Sample

## ASPEN Drainage Installation

John Lord offer supply only or full installation, with fully welded and polished joints, and commissioning. John Lord also offer on-going annual inspection and maintenance contracts.

For advice regarding the most suitable ASPEN Stainless for you please contact our technical sales team today to discuss your requirements.

## ASPEN Slip Resistance

Classification of slip potential surfaces in wet and dry conditions are according to 'The Assessment of Floor Slip Resistance: The UK Slip Resistance Group (UKSRG) Guidelines issues 4 / 2011'. Results were obtained from tests carried out by the Health and Safety Laboratory (HSL) and from our own internal laboratory tests. All figures are measured and expressed under laboratory conditions: Actual performance may vary from the above values depending upon site conditions.

Contact the Technical Sales team for the actual slip resistant values or more information about the UKSRG.

## ASPEN Drainage Options

- > Available in grade 316 stainless steel (British Standard 316S31, Euronorm 1.4401).
- > Standard Smooth Cover.
- > Durbar Cover for increased grip under foot.
- > Ladder Cover for maximum drainage to channel.
- > Serrated Ladder Cover for maximum drainage to channel and increased grip under foot.
- > Locking cover available.
- > All Covers can fit square top Gullies.