

# ASPEN Locking Gully Drain Cover

Load Class up to C250



ASPEN Stainless hardworking stainless steel products for hardwearing environments: British engineered and sealed with a lifetime guarantee.

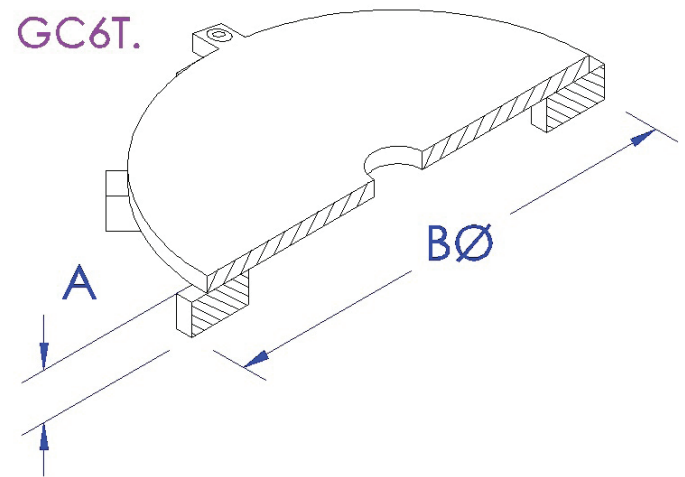
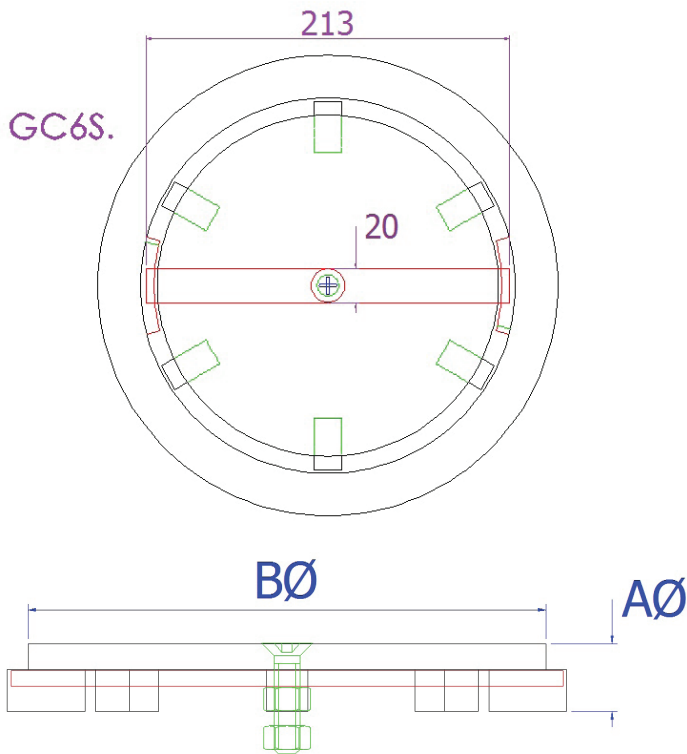
## Product Description

The standard Locking Gully Drain Cover is available for the Tiehack or Summit Gullies. There are two types of locking details: Side locking and central locking. Suitable for hygienic environments accessed by medium load factory traffic.

## Technical Specification

- > 16mm x 16mm stainless steel bar
- > 10mm stainless steel plate.
- > Summit Locking bar: 6mm stainless steel.
- > Stitch welded.
- > Grade 304 stainless steel (British Standard 304S31, Euronorm 1.4301).
- > Low Slip Potential according to UKSRG in dry & wet conditions.

MODEL	REF	COVER DIMENSIONS		LOAD CLASS
		A	B	
LOCKING SUMMIT	GC6S	26	200	
LOCKING TIEHACK	GC6T	26	280	



The blue measurements indicate the variable dimensions shown in the chart above. All dimensions in mm.

# ASPEN Locking Gully Drain Cover

Load Class up to C250



ASPEN Stainless hardworking stainless steel products for hardwearing environments: British engineered and sealed with a lifetime guarantee.

## ASPEN Drainage System

As the UK based designer and supplier of all ASPEN Stainless, John Lord is able to offer a full range of products to complete your drainage system and can customize any of its Units or manufacture complete bespoke drainage systems.

### Key Benefits

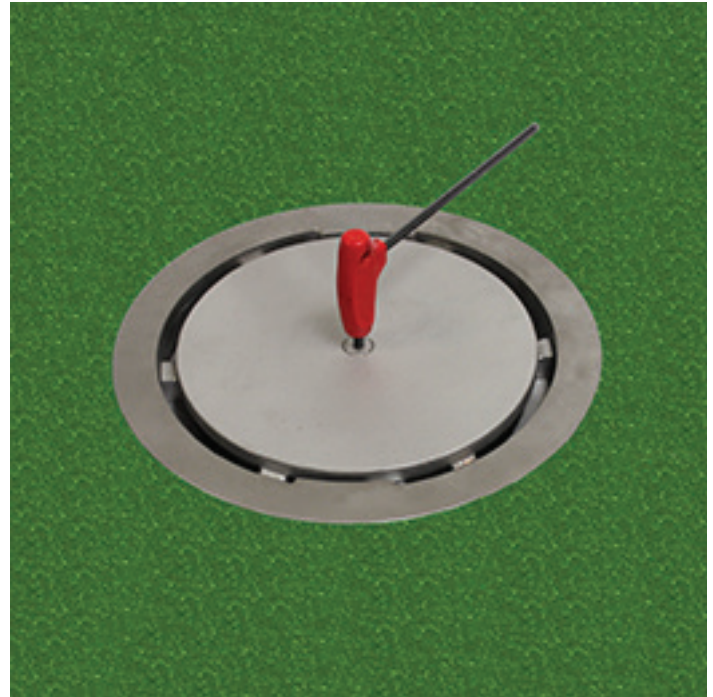
This style of Gully cover provides maximum liquid drainage to the channel and provides a robust surface to withstand medium load factory traffic on a daily basis. The Cover is designed to be locked to the Gully to remove any movement under loading.

### Maintenance

Stainless steel equipment should be occasionally thoroughly checked for retained deposits and concentrated fluid build up that causes corrosion.

### Cleaning

Many factors affect the choice of cleaning method and frequency of its application. Suitable methods for stainless steel are: water and steam; mechanical non abrasive scrubbing; organic solvents and mild detergents.



Locking Gully Drain Cover Sample

## ASPEN Drainage Installation

John Lord offer supply only or full installation, with fully welded and polished joints, and commissioning. John Lord also offer on-going annual inspection and maintenance contracts.

For advice regarding the most suitable ASPEN Stainless for you please contact our technical sales team today to discuss your requirements.

## ASPEN Slip Resistance

Classification of slip potential surfaces in wet and dry conditions are according to 'The Assessment of Floor Slip Resistance: The UK Slip Resistance Group (UKSRG) Guidelines issues 4 / 2011'. Results were obtained from tests carried out by the Health and Safety Laboratory (HSL) and from our own internal laboratory tests. All figures are measured and expressed under laboratory conditions: Actual performance may vary from the above values depending upon site conditions.

Contact the Technical Sales team for the actual slip resistant values or more information about the UKSRG.

## ASPEN Drainage Options

- > Available in grade 316 stainless steel (British Standard 316S31, Euronorm 1.4401).
- > Standard Smooth Cover.
- > Durbar Cover for increased grip under foot.
- > Ladder Cover for maximum drainage to channel.
- > Serrated Ladder Cover for maximum drainage to channel and increased grip under foot.
- > Resin Filled Cover for matching with existing floors and an anti-slip surface.
- > All Covers can fit square top Gullies.