



PRODUCT DESCRIPTION

Uragard HT ESD is part of our HT Range of heavy-duty, high performance, anti-slip polyurethane screeds.

Uragard HT ESD also provides superior all-round performance with built in chemical resistance, exceptional wear, impact and abrasion resistance, and thermal shock resistance. The system can be used in areas where anti-static and static dissipative qualities are required.

The products antistatic and static dissipative properties comply with BS EN 61340-5-1 and 1081 and is ideal for dry production and processing environments.

KEY BENEFITS

- Anti-slip surface
- Fast curing, single application
- Excellent chemical resistance
- Antistatic and ESD properties
- Temperature resistant at temperatures from -25°C to 120°C at 9mm thickness
- Non-tainting
- Excellent substrate adhesion

TECHNICAL DATA

John L. Lord & Son Ltd is an ISO 9001:2008 accredited company and all products are manufactured strictly to ISO quality standards.

Physical Properties

Complies with BS 8204-6 / FeRFA Type 8, System Make-Up:

Primer(s):	1 coat Epigard Fastrac Primer followed by copper tape and 1 coat Epigard ESD Primer
System:	1 application Uragard HT ESD
Sealer Coat(s):	None as standard
Optional Variations:	None as standard

System Details:

Finish:	White speckled, resin rich matt, anti-slip
Thickness:	6 mm to 12 mm

Chemical Resistance

Highly resistant to a wide range of chemicals including organic solvents, acids and alkalis. For full details consult the John Lord Technical Dept. Note: Discolouration or staining may occur when exposed to some chemicals based on the nature of the spill and cleaning regime followed.



BioCote® additive

John Lord has partnered with BioCote® to provide an optional antimicrobial additive to our flooring systems. This additive provides continuous protection against bacteria, mould, and mildew. For further information contact your John Lord representative.

Performance Data

Compressive Strength:	60 N/mm ²
Flexural Strength:	15 N/mm ²
Tensile Strength:	6.5 N/mm ²
Bond Strength to Concrete:	> 2.5 N/mm ²
Temperature Resistance:	Constant -25°C to 100°C. Occasional spillages of up to 120°C at 9mm thickness
Abrasion Resistance:	BS8204-2 Class AR0,5: < 0.05 mm
BS EN 1081 (R ₂):	< 10 ⁸ Ω
BS EN 61340-5-1:	< 10 ⁹ Ω

Uragard HT ESD trowelled finish, is classified as Low Slip Potential Flooring (both wet and dry) as described in 'The Assessment of Floor Slip Resistance: The UKSG Guidelines issue 4 / 2011'. Results were obtained from tests carried out by the Health and Safety Laboratory (HSL) and from our own internal laboratory tests.

All figures are measured and expressed under laboratory conditions. Actual performance may vary from the above values depending upon site conditions.

Curing Time

A completed resin floor can go into service after the following minimum cure periods at 15°C and above:

Light Traffic:	16 hours
Heavy Traffic:	48 hours

SHELF LIFE AND STORAGE

The product should be kept in its original unopened container until use. The product should be stored in weather tight conditions at temperatures between 10°C and 25°C, avoiding direct sunlight. Under these conditions this product has a shelf life of up to 6 months.

CE MARKING

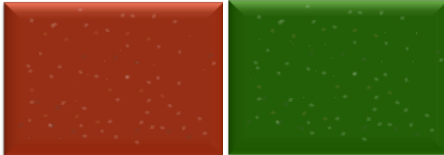


EN 13813 AR0.5-B2.8-IR20.0

Synthetic resin screed material for use internally in buildings

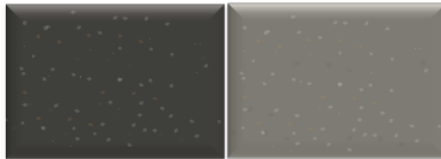
Bond Strength:	B 2.8
Wear Resistance:	AR 0,5
Impact Resistance:	IR 20.0

STANDARD COLOUR RANGE



Red

Green



Dark Grey

Admiralty Grey

These colours are an indication only. Please request samples for accurate colour tiles.

Optional Colour Range



Midnight Blue

Blue uses organic pigments which have instability under differing shear rates and atmospheric conditions. This can lead to increased variance between mixes. Blue Epigard Epiflex is a lighter shade than the screed due to manufacturing constraints.

Due to their inherent chemical composition, all polyurethanes discolour over time. However, this discolouration is more prominent with Blue. Please contact your John Lord representative for further information.

APPLICATION INFORMATION

John Lord recommends that all products are installed by their own Contracts Department who provide a professional service with experienced Project Management supervision and skilled, trained and NVQ/CSCS approved employees.

Suitable Applications

- Wet and Dry Food Processing, eg. Abattoirs, Bakeries
- Pharmaceutical Production
- Chemical Processing & Engineering Works
- Working Environments subject to undesirable static discharge

Application Temperature

Air and substrate temperatures should be maintained between 12°C and 20°C during the application and curing period of this product. Materials should also be kept in a warm area of 15°C minimum temperature for 12 hours prior to application. Dehumidifiers must be used where high humidity conditions prevail. Ensure adequate ventilation during application.

Priming

The dry, prepared, dust-free substrate should receive a roller applied tack coat of Epigard Fastrac Primer. Copper Tape should then be applied once cured before a roller applied coat of Epigard ESD Primer is applied. After a minimum of 8 hours curing time at 18°C the Uragard HT ESD can be applied.

System Application

The Uragard HT ESD should be mixed and trowel applied at a thickness of between 6 and 12 mm.

Joints

All known expansion joints should be followed through the resin floor finish using Epiflex Jointing Mastic. If concrete movement or cracking takes place after application, then reflective cracking of the topping may occur.

Note: The texture of Uragard HT ESD on the finished floor surface may appear banded or slightly variable. This is a natural, visual aspect of the system influenced by atmospheric conditions and is not defective in anyway. Polyurethane systems have limited colour stability which can result in discoloration of the floor over a period of time or upon exposure to UV light. Our standard colour range has been carefully chosen to provide a colour range limiting the extent of discolouration.

IN-SERVICE MAINTENANCE

Good housekeeping and regular cleaning can considerably extend the service life of a resin screed floor and will enhance the floor's appearance and reduce soiling tendencies.

Suitable cleaning methods for this product include:

- Rotary scrubbing machine or hot water washing (up to 80°C) with suitable detergent products. See John Lord Cleaning Guide for further details.
- Flash steam clean is suitable on an occasional basis.

STATEMENT OF RESPONSIBILITY

The information within this John Lord Technical Data Sheet is provided as an introduction to the system only and may vary according to on-site or environmental conditions. As the information provided is of a general nature, no guarantee is implied, and it is the responsibility of the client or user to discuss in detail with John Lord the suitability of the product for a particular application. John Lord cannot accept any responsibility for work and the subsequent performance of their systems that are not controlled by their own contracting services. John Lord reserve the right to alter information in this document without prior notification; it is the responsibility of the client or user to obtain the most recent issue.