

ASPEN Aviemore Drain Channel

Load Class up to A15



ASPEN Stainless hardworking stainless steel products for hardwearing environments: British engineered and sealed with a lifetime guarantee.

Product Description

The standard range of Aviemore Drainage Channel is manufactured in lengths suitable for the drainage system design. Cell bars are welded at one metre intervals to prevent the drain covers from sliding and aid installation.

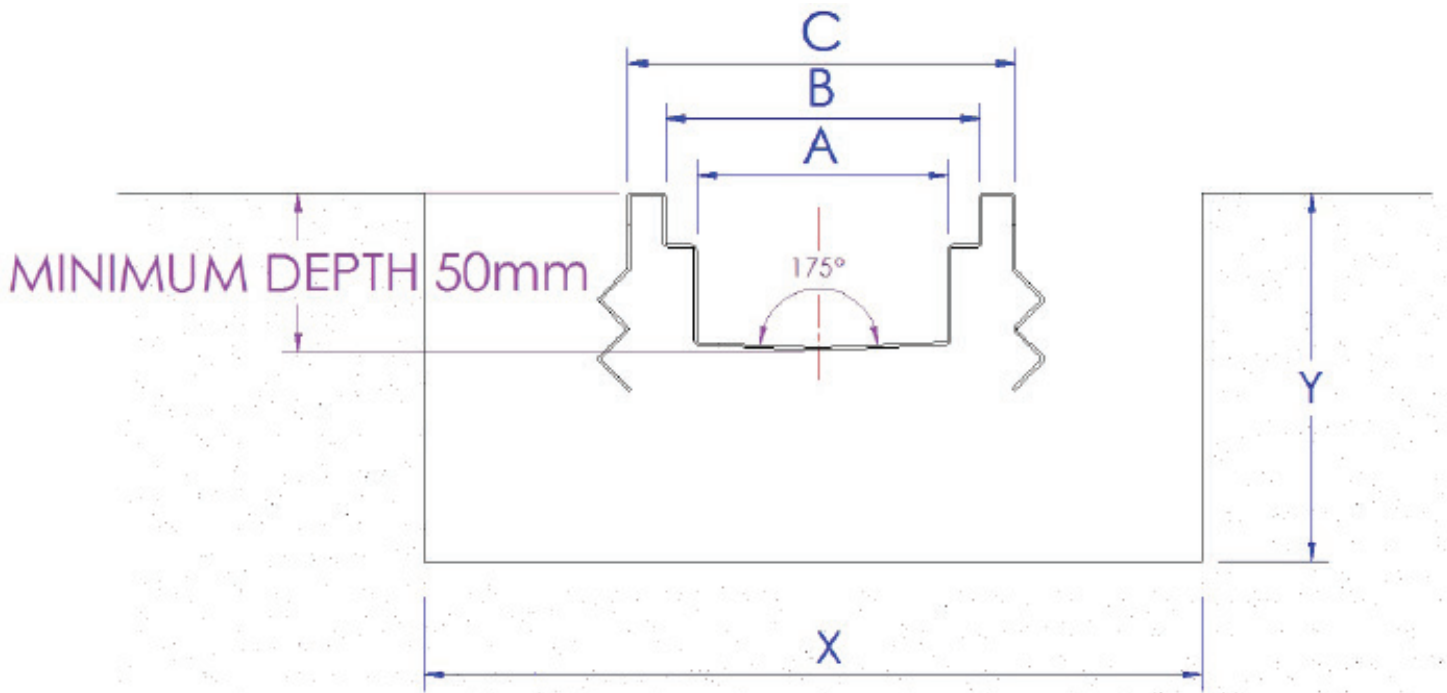
Suitable for hygienic environments accessed by light factory traffic.

The Channel is available in one standard sizes.

Technical Specification

- > Made from 1.2mm stainless steel.
- > Grade 304 stainless steel (British Standard 304S31, Euronorm 1.4301).

MODEL	REF	CHANNEL DIMENSIONS			CUT OUT DIMENSIONS		MINIMUM FALL	LOAD CLASS
		A	B	C	X	MIN Y		
AVIEMORE 100	COL100	100	150	180	410	CHANNEL DEPTH + 100	1:150	



The blue measurements indicate the variable dimensions shown in the chart above. All dimensions in mm.

ASPEN Aviemore Drain Channel

Load Class up to A15



ASPEN Stainless hardworking stainless steel products for hardwearing environments: British engineered and sealed with a lifetime guarantee.

ASPEN Drainage System

As the UK based designer and supplier of all ASPEN Stainless, John Lord is able to offer a full range of products to complete your drainage system and can customize any of its Units or manufacture complete bespoke drainage systems.

Key Benefits

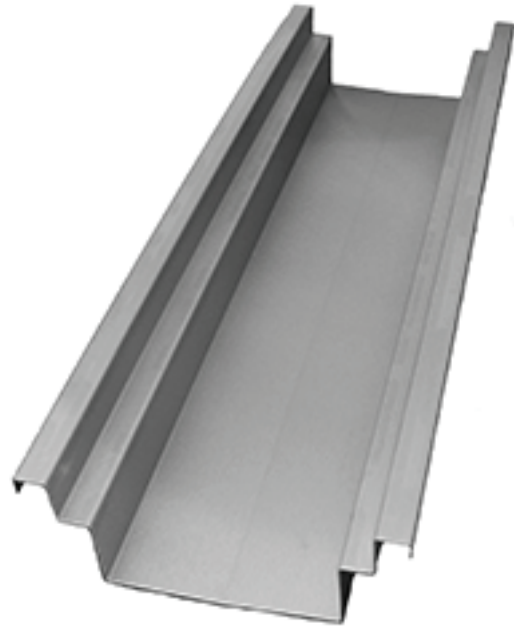
The Aviemore range is a standard profile for use in pedestrian factory traffic environments. The simple design provides easy clean surfaces and a self draining fall slope.

Maintenance

Stainless steel equipment should be occasionally thoroughly checked for retained deposits and concentrated fluid build up that causes corrosion.

Cleaning

Many factors affect the choice of cleaning method and frequency of its application. Suitable methods for stainless steel are: water and steam; mechanical non abrasive scrubbing; organic solvents and mild detergents.



Aviemore Drain Channel Sample

ASPEN Drainage Installation

John Lord offer supply only or full installation, with fully welded and polished joints, and commissioning. John Lord also offer on-going annual inspection and maintenance contracts.

For advice regarding the most suitable ASPEN Stainless for you please contact our technical sales team today to discuss your requirements.

ASPEN Drainage Options

- > Available in grade 316 stainless steel (British Standard 316S31, Euronorm 1.4401).
- > A range of ASPEN Drain covers to suit.
- > The Aspen Drain Covers will determine the Load Class of the Drainage Channel.