

ASPEN KC2 Wall Kerb | Internal Single Sided



ASPEN Stainless hardworking stainless steel products for hard wearing environments: British engineered with a lifetime guarantee.

Product Description

The standard KC2 Internal Single Sided Wall Kerb support system is designed to support the hygienic wall panel above the finish floor level to reduce the ingress of liquids and offer some protection to factory traffic. It also provides a hygienic interface between floor and wall and is mounted around columns and block walls.

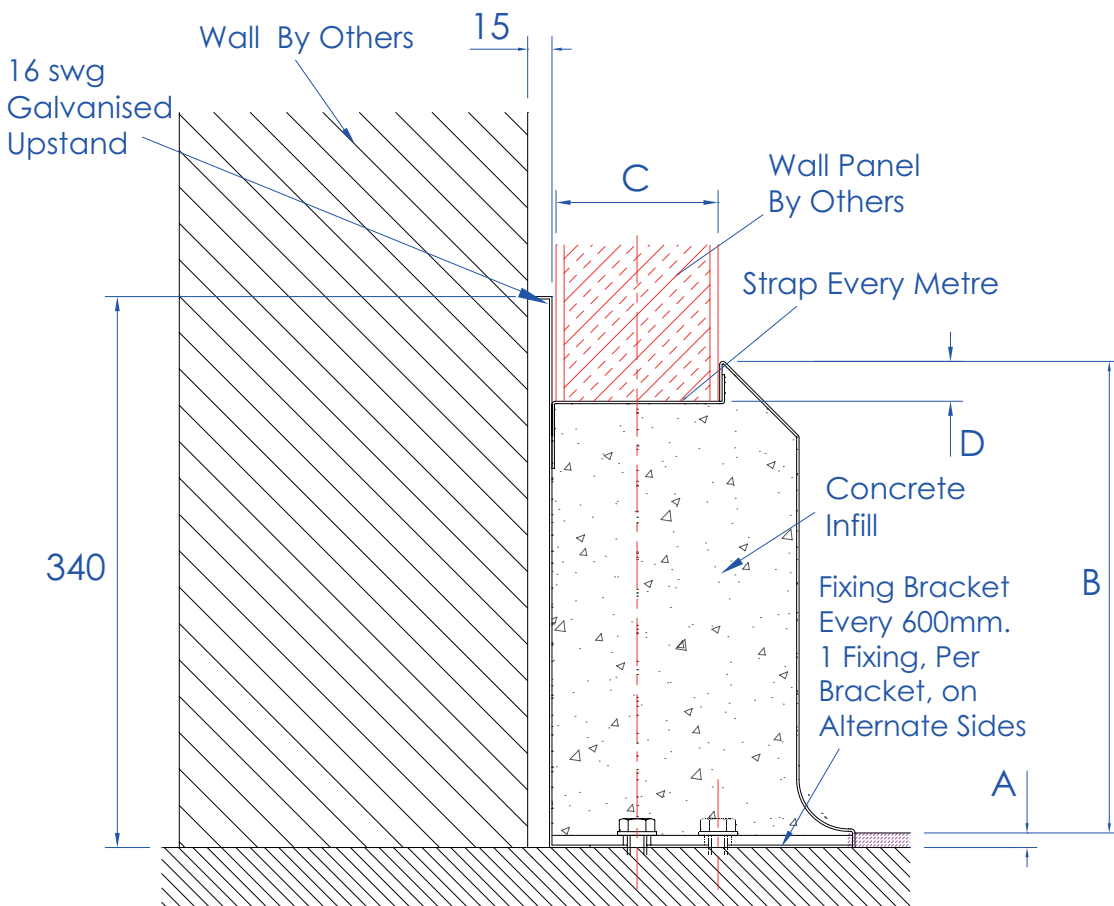
Suitable for use with a Uragard 6-9 mm resin finish.

Size C is custom to each project according to its requirements. The profile of the kerb is dependent on wall thickness.

Technical Specification

- > 2mm 240 grit stainless steel.
- > External galvanised mild steel channel back plate.
- > C30 concrete infill.
- > Resin anchor fixings.
- > Fully welded construction.
- > Available in grade 316 stainless steel (British Standard 316S31, Euronorm 1.4401).
- > British Galvanised Standard BS EN ISO 1461:2009.

MODEL	REF	KERB DIMENSIONS			
		A	B	C	D
SINGLE INTERNAL	KC2	9	290 NOMINAL	VARIABLE	25



All dimensions in mm.

ASPEN KC2 Wall Kerb | Internal Single Sided



ASPEN Stainless hardworking stainless steel products for hard wearing environments: British engineered with a lifetime guarantee.

ASPEN Kerbing System

As a UK based designer and manufacturer, ASPEN Stainless is able to offer a full range of products to complete your kerbing system and can customize any of its Units or manufacture complete bespoke kerbing systems.

Key Benefits

This profile is ideal for installing with a Uragard resin floor. The kerb should be installed on the base slab. The Kerb is fully welded and made to suit sliding, personnel, roller doors, corners, tees and wall ends. The Kerb is easily removable if walls need to be removed, altered, or relocated.

Maintenance

Stainless steel equipment should be occasionally thoroughly checked for retained deposits and concentrated fluid build up that causes corrosion.

Cleaning

Many factors affect the choice of cleaning method and frequency of its application. Suitable methods for stainless steel are: water and steam; mechanical non abrasive scrubbing; organic solvents and mild detergents.

ASPEN Kerbing Installation

ASPEN Stainless offer supply only or full installation, with fully welded and polished joints, and commissioning. ASPEN Stainless also offer on-going annual inspection and maintenance contracts.

For advice regarding the most suitable ASPEN Stainless products for you, please contact our technical sales team today to discuss your requirements.



KC2 Kerb Sample

ASPEN Kerbing Options

- > Other stainless steel thicknesses available.
- > A range of Uragard resin flooring can be recommended.

Stainless Steel 316 Mechanical Data

PROPERTY	VALUE
PROOF STRESS	220 min MPa
TENSILE STRENGTH	520 - 680 MPa
ELONGATION A5	40 min %