

ASPEN Stainless hardworking stainless steel products for hard wearing environments: British engineered with a lifetime guarantee.

Product Description

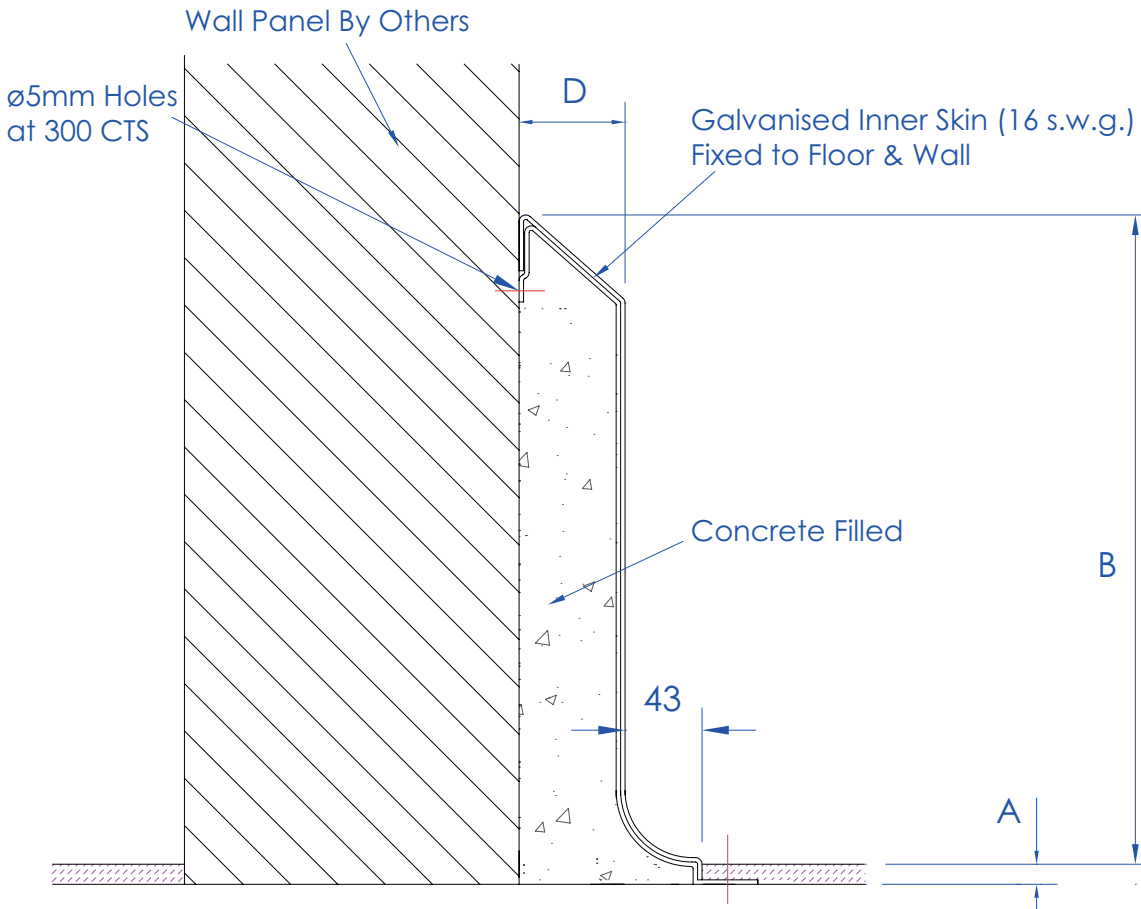
The standard KC3 Clip On Wall Kerb is mounted in front of block walls and freezer panels to offer some protection and continue the surrounding Kerb profile.

Suitable for use with a Uragard 6-9 mm resin finish.

Technical Specification

- > 2mm 240 grit stainless steel.
- > Internal galvanised mild steel channel support.
- > C30 concrete infill.
- > Resin anchor fixings.
- > Available in grade 316 stainless steel (British Standard 316S31, Euronorm 1.4401).
- > British Galvanised Standard BS EN ISO 1461:2009.

| MODEL | REF | KERB DIMENSIONS | | | |
|---------|-----|-----------------|----------------|----|----|
| | | A | B | C | D |
| CLIP ON | KC3 | 9 | 290 NOMINAL | NA | 50 |



All dimensions in mm.

ASPEN Stainless hardworking stainless steel products for hard wearing environments: British engineered with a lifetime guarantee.

ASPEN Kerbing System

As a UK based designer and manufacturer, ASPEN Stainless is able to offer a full range of products to complete your kerbing system and can customize any of its Units or manufacture complete bespoke kerbing systems.

Key Benefits

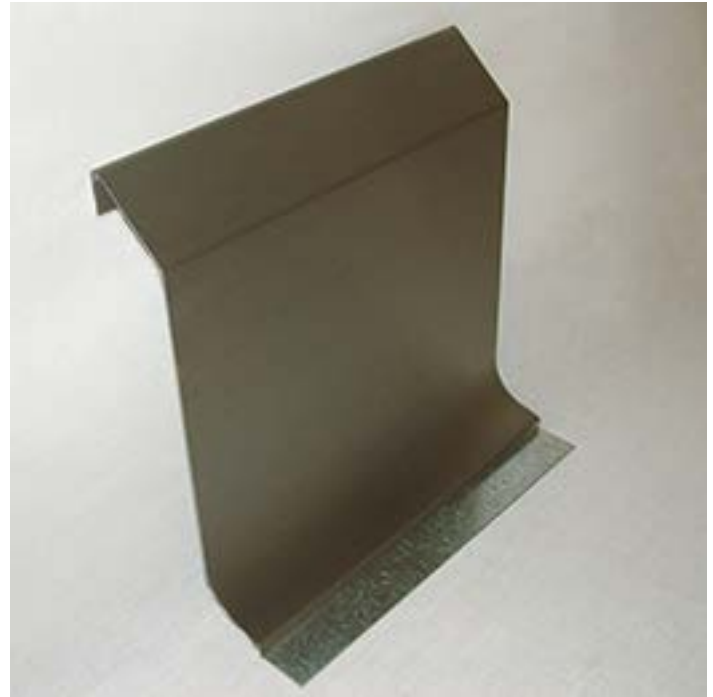
This profile is ideal for installing with a Uragard resin floor. The kerb should be installed on the base slab. The Kerb is fully welded and made to suit sliding, personnel, roller doors, corners, tees and wall ends.

Maintenance

Stainless steel equipment should be occasionally thoroughly checked for retained deposits and concentrated fluid build up that causes corrosion.

Cleaning

Many factors affect the choice of cleaning method and frequency of its application. Suitable methods for stainless steel are: water and steam; mechanical non abrasive scrubbing; organic solvents and mild detergents.



KC3 Kerb Sample

ASPEN Kerbing Installation

ASPEN Stainless offer supply only or full installation, with fully welded and polished joints, and commissioning. ASPEN Stainless also offer on-going annual inspection and maintenance contracts.

For advice regarding the most suitable ASPEN Stainless products for you, please contact our technical sales team today to discuss your requirements.

ASPEN Kerbing Options

> A range of Uragard resin flooring can be recommended.