

ASPEN KE1 Wall Kerb | Internal Double Sided



ASPEN Stainless hardworking stainless steel products for hardwearing environments: British engineered with a lifetime guarantee.

Product Description

The KE1 Internal Double Sided Wall Kerb is designed to support a hygienic wall panel above the floor level, which provides a hygienic interface between floor and wall, reducing the ingress of liquids.

The Kerb has a specially designed top fold for mastic seal retention.

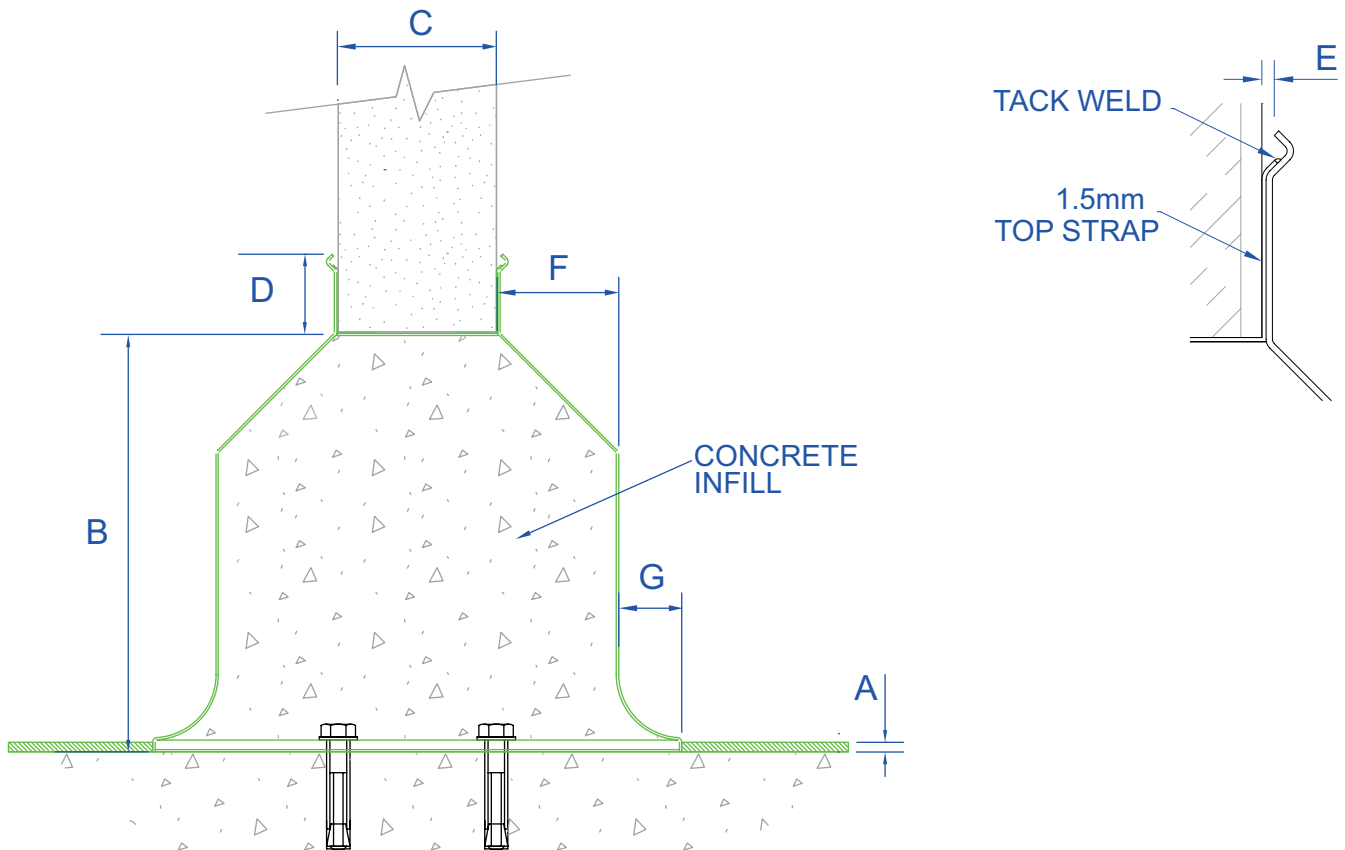
Suitable for use with a 6-9mm resin floor finish.

The Kerb measurement C (hygienic wall) is custom to each project according to the requirements.

Technical Specification

- > 2mm 240 grit stainless steel.
- > Top fold to accept and protect mastic seal.
- > C30 concrete infill.
- > Resin anchor fixings.
- > Fully welded construction.
- > Available in grade 316 stainless steel (British Standard 316S31, Euronorm 1.4401).

MODEL	REF	KERB DIMENSIONS						
		A	B	C	D	E	F	G
DOUBLE INTERNAL	KE1	9	265	VARIABLE	50	2	75 OR VARIABLE	45 OR VARIABLE



All dimensions in mm.

ASPEN KE1 Wall Kerb | Internal Double Sided



ASPEN Stainless hardworking stainless steel products for hard wearing environments: British engineered with a lifetime guarantee.

ASPEN Kerbing System

As a UK based designer and manufacturer, ASPEN Stainless is able to offer a full range of products to complete your kerbing system and can customize any of its Units or manufacture complete bespoke kerbing systems.

Key Benefits

The profile of this wall kerb is ideal for a building wanting to install a resin floor finish. The kerb should be installed on the base slab. The Kerb is fully welded and made to suit sliding, personnel, roller doors, corners, tees, columns and wall ends. The Kerb is easily removable if walls need to be removed, altered, or relocated.

Maintenance

Stainless steel equipment should be occasionally thoroughly checked for retained deposits and concentrated fluid build up that causes corrosion.

Cleaning

Many factors affect the choice of cleaning method and frequency of its application. Suitable methods for stainless steel are: water and steam; mechanical non abrasive scrubbing; organic solvents and mild detergents.

ASPEN Kerbing Installation

ASPEN Stainless offer supply only or full installation, with fully welded and polished joints, and commissioning. ASPEN Stainless also offer on-going annual inspection and maintenance contracts.

For advice regarding the most suitable ASPEN Stainless products for you, please contact our technical sales team today to discuss your requirements.



KE Wall Kerb Installation

ASPEN Kerbing Options

- > Other stainless steel thicknesses available.
- > A range of resin flooring can be recommended from our sister company John Lord Flooring.

Stainless Steel 316 Mechanical Data

PROPERTY	VALUE
PROOF STRESS	220 min MPa
TENSILE STRENGTH	520 - 680 MPa
ELONGATION A5	40 min %