

Aspen Summit End Bottom Drain Outlet

Load Class up to FACTA D/D400



Aspen Stainless hardworking stainless steel products for hardwearing environments: British engineered with a lifetime guarantee.

Product Description

The Summit end outlet is a versatile and hygienic drainage channel outlet that can be positioned at the end of a channel. The outlet box features a self draining base and the outlet itself is fully drainable & cleanable.

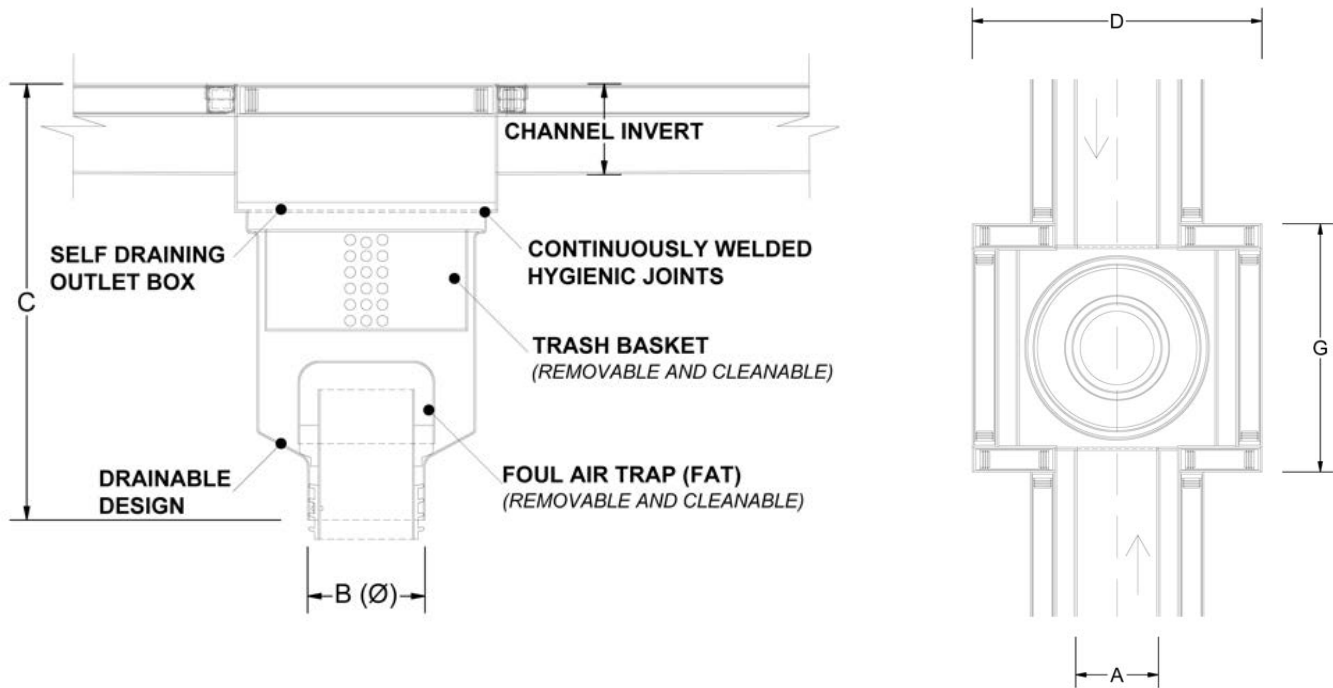
The trash basket and foul air trap (FAT) are removable to aid cleanability and provide access for rodding.

The Summit outlet is suitable for environments which demand the highest hygienic standards.

Technical Specification

- Developed in accordance with hygienic design principles BS EN 1672, BS EN ISO 14159 & EHEDG documents no. 8, 13 & 44.
- Fully drainable design, incorporating internally radiused joints.
- FAT: Foul air trap (maintains 50mm water trap)
- Cleanable design (FAT & trash basket removable).
- Available with solid or ladder style covers.
- Stainless steel grade 316.
- Outlet Drain Cover will dictate the load class up to D400/FACTA D Loading.

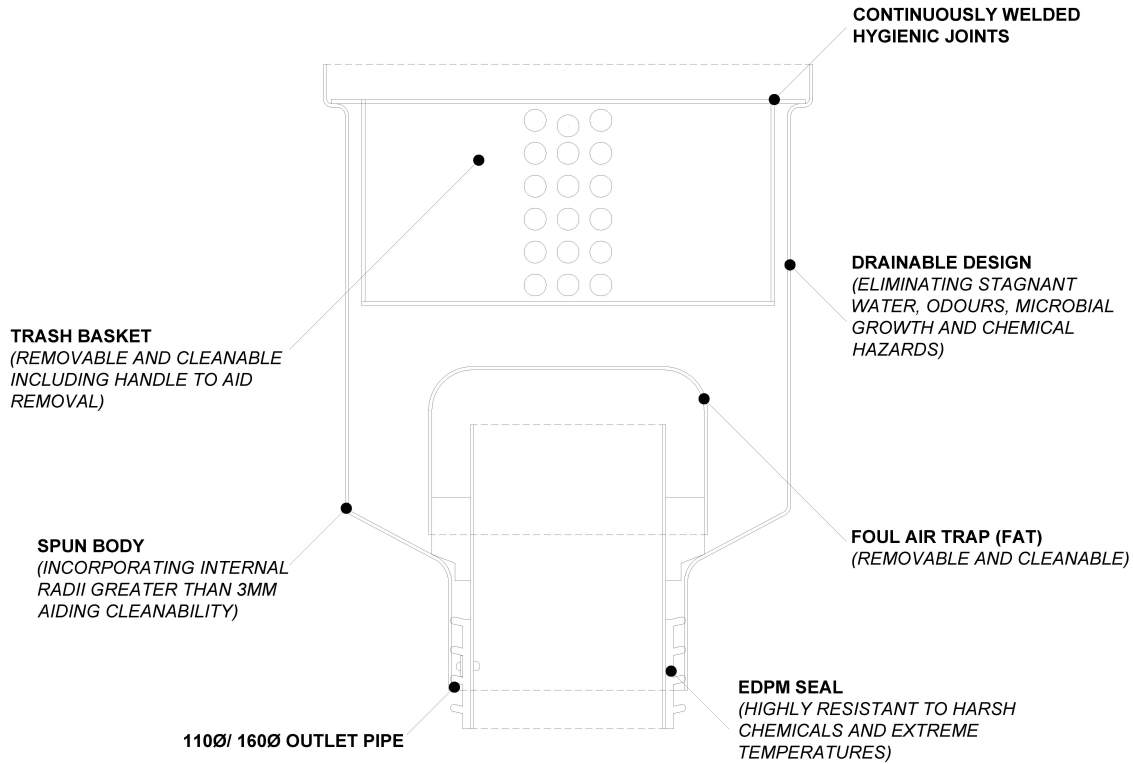
MODEL	REF	OUTLET DIMENSIONS					FLOW RATES	FACTA LOAD CLASS
		A	B	C	D	G		
100 CHANNEL 110Ø OUTLET	OSCB100110	100	110	404 MIN	350	300	3 Ltr/Sec	
100 CHANNEL 160Ø OUTLET	OSCB100160	100	160	477 MIN	400	350	6 - 7 Ltr/Sec	
170 CHANNEL 110Ø OUTLET	OSCB170110	170	110	404 MIN	300	300	3 Ltr/Sec	
170 CHANNEL 160Ø OUTLET	OSCB170160	170	160	477 MIN	400	350	6 - 7 Ltr/Sec	



All dimensions in mm.

Aspen Summit End Bottom Drain Outlet

Load Class up to FACTA D/D400



Available Options:

- Various drainage cover options available
- Trash Basket (supplied as standard)
- Trash basket perforation size variable

Cleaning

Many factors affect the choice of cleaning method and frequency of its application. Suitable methods for stainless steel are: water and steam; mechanical non abrasive scrubbing; organic solvents and mild detergents.

Maintenance

Stainless steel equipment should be occasionally thoroughly checked for retained deposits and concentrated fluid build up that causes corrosion.

ASPEN Drainage Installation

Canal Engineering offer supply only or full installation, with fully welded and polished joints, and commissioning. Canal Engineering also offer on-going annual inspection and maintenance contracts.

For advice regarding the most suitable Aspen Stainless for you please contact our technical sales team today to discuss your requirements.